

Tree Removals

Why are they necessary?

How you can help...



Why are tree removals necessary?

- ▶ Property Safety / Damage Mitigation
- ▶ Fuels Management
- ▶ Personal Safety
- ▶ General Hazard Mitigation
- ▶ Overall River & forest Ecosystem Health
- ▶ Sewer Line Construction & Bank Stabilization



Property Safety



Fuels Management



Personal Safety

Tree Removals

Sewer line construction and Bank Stabilization



Trenching is necessary for construction that will stabilize the sewer line and the surrounding river bank

Tree Removals
For bank
stabilization

Trenching is devastating for tree root systems and can compromise a tree's ability to remain viable

Tree Removals

Many trees are in the path of sewer line construction and Bank Stabilization
Among these trees are potential hazard trees



What is a Hazard Tree?

A tree that has a structural defect which makes it likely to fail in whole or in part; or more immediately, a tree that poses a level of risk to people or property

Problems to Note in the Canopy (Up):

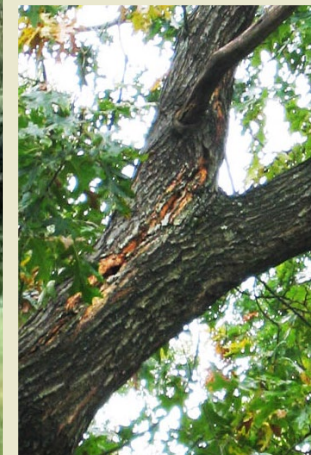
- Co-dominant leaders or Split trunk
- Large broken Branches
- Lack of foliage

Problems to Note along the trunk (in the middle):

- Split trunk
- Leaning
- Cuts or Holes
- Weeping or Bark Peeling

Problem's that begin at the roots (down):

- Root Rot
- Shallow root system
- Roots damaged from Construction



What is a Hazard Tree?

A leaning tree can be or become a hazard

Trees follow the Light, they are shaped by the Wind, and changed by soils eroding around them

Leaning trees however, are structurally inferior and are potential hazard trees



HAZARD TREES

- Trees that begin leaning suddenly
- A worsening in lean
- Tree is leaning over trafficked area or structure
- Tree is creaking, cracking, or soils are heaving around it
- Leaning begins after a storm



Is your tree a Hazard Tree?

Questions to help you determine

What would the tree hit if it failed?

- Is your house/structure likely to be a target
- Is your drive likely to be the target

How likely is it that in failing, the tree will impact a target?

- If a structure is the target, there is a 100% of it getting hit
- If a driveway is the target, the chance of the tree hitting a target is lower

How severe would the consequences of failure/impact be?

- If the target is your roof, the consequences could be considerably severe
- If the target is the open mountainside, the consequences would not be severe



Hazard Trees

Potential Risks



How you can help...

Look up



**Look in the
middle**



Look down



By identifying potential hazard trees,

You can help selectively target tree removals by identifying potential hazard trees prior to clearing and construction

Look Up

Signs of a Sick or Problem Tree

Yellowing, Dry, or Brittle Branches



Co-Dominance, Two leaders,
or
Split Tops



Look in the Middle

Signs of a Sick Tree or Problem Tree

Wet or Dried **Sap** in several locations along tree's trunk



Cracking



Look Down

Signs of a Sick Tree

Bark damage or missing bark



Holes in/through bark



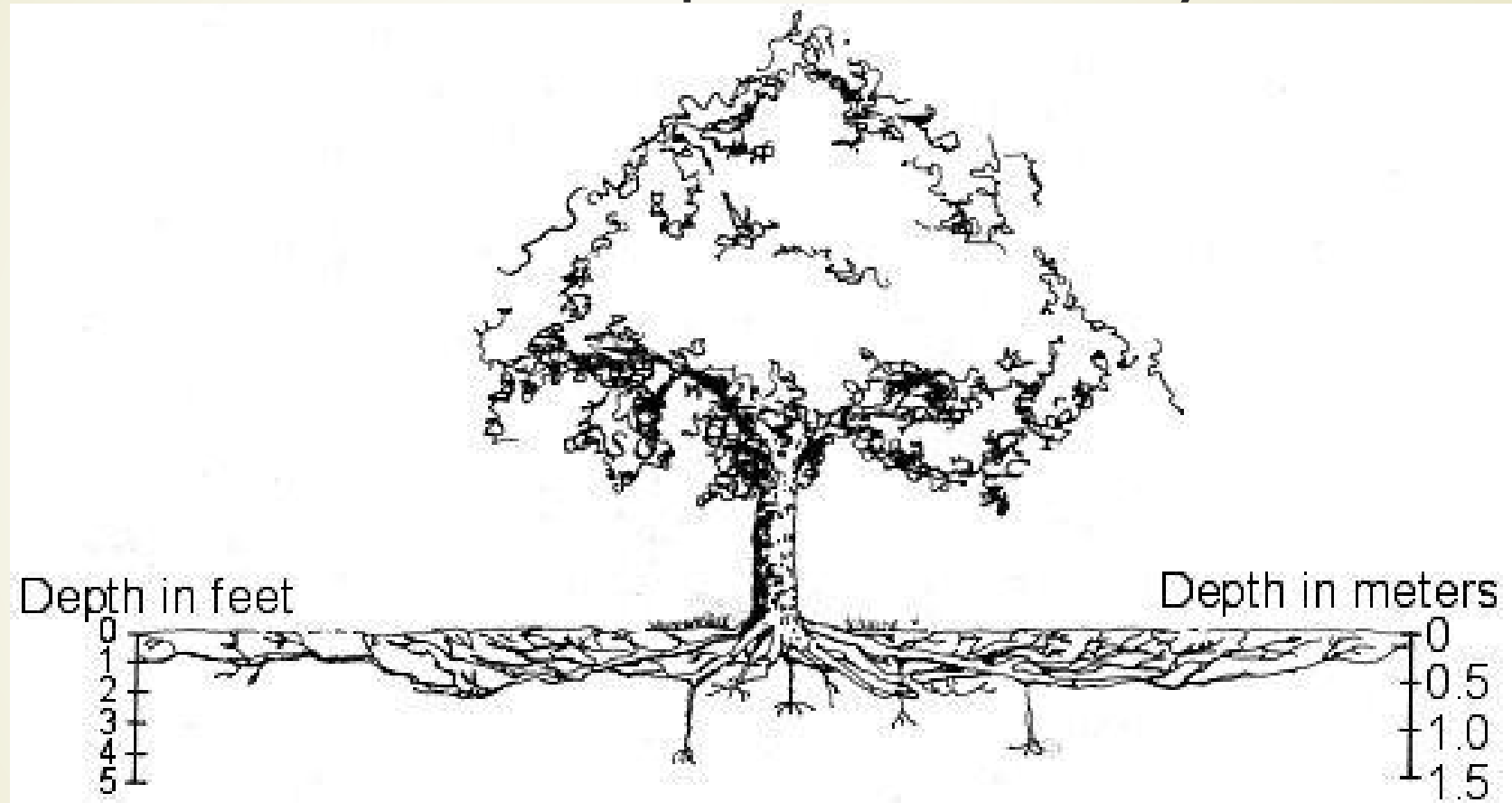
Holes or cavities at trunk base



Fungus at trunk base



Root disturbance impacts a tree's vitality and structure



Root Protection Zone



90% of the root system is located in the first 12 to 18 inches of soil.
The roots extend radially from the trunk
one to two times the height of the tree

Root Disturbance – Cut Roots

- ▶ Cutting and Trenching through tree roots often causes decline and failure



Identify Sick / Declining Trees

Bacteria, virus, fungus, and pests such as beetles and other insect larvae will leave evidence of the troubles they cause

Oak Wilt



Pine Blight





Notify and Coordinate Efforts

- ▶ Notify the High Water Mark
 - ▶ Contact Phoebe Suina @ (505) 979-1211 for information regarding tree removals during the Hazard Mitigation and Stabilization for Sewer Lines
- ▶ Notify the Village of Ruidoso
 - ▶ Forestry Department (575) 257-5544 to coordinate tree removals for fuel management, hazards, and construction; and potentially limit the number of tree removals from your property
- ▶ Notify an Arborist or Tree Professional
 - ▶ Discuss your concerns with a licensed tree professional to help knowledgeably guide the diagnosis and removal of trees on your property